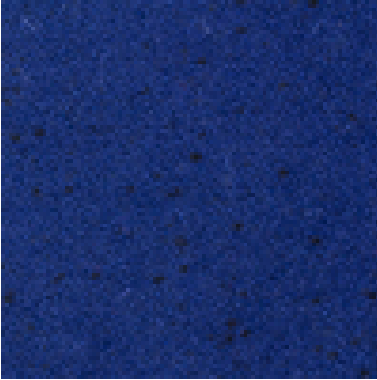
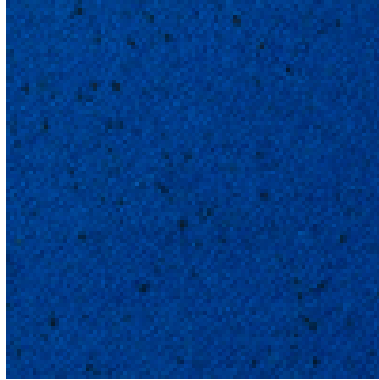


# Blenheim

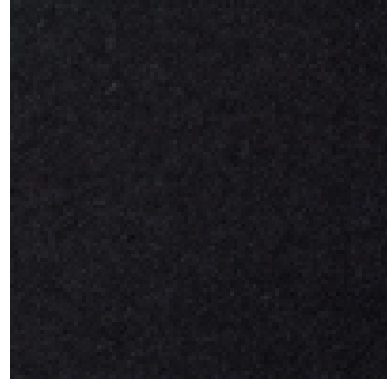
Amersham  
701



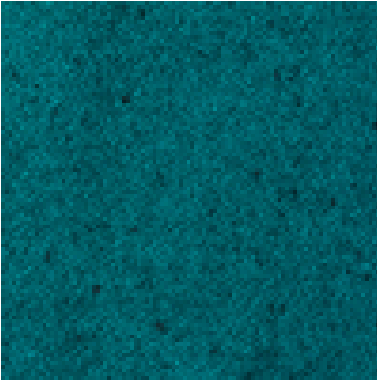
Banbury  
703



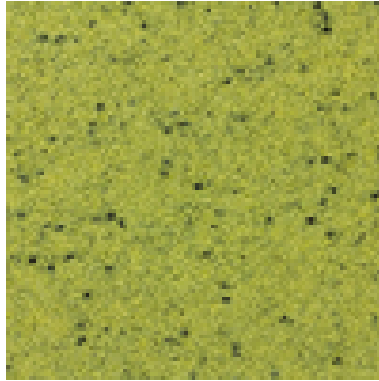
Bassett  
704



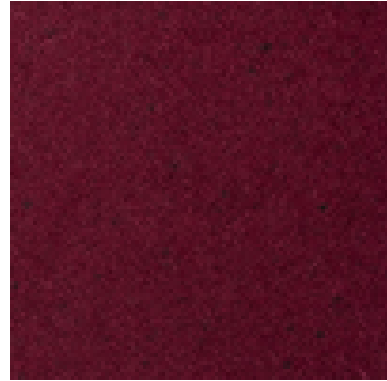
Bicester  
724



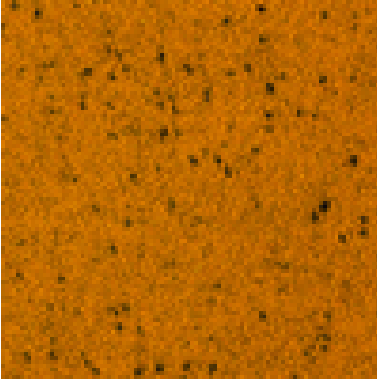
Calne  
747



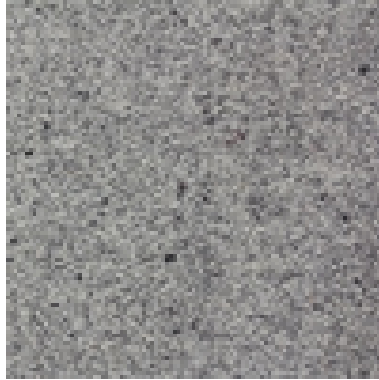
Charlbury  
706



Chesham  
707



Dapley  
727



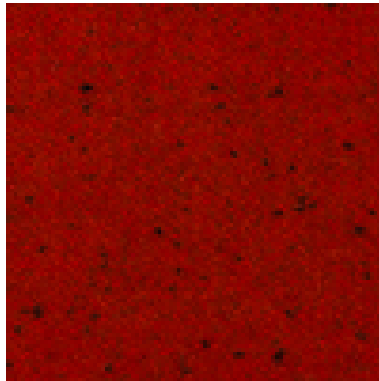
Evesham  
728



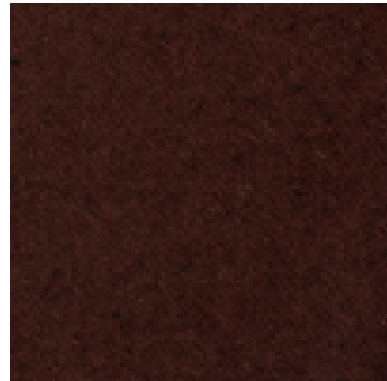
Malmesbury  
731



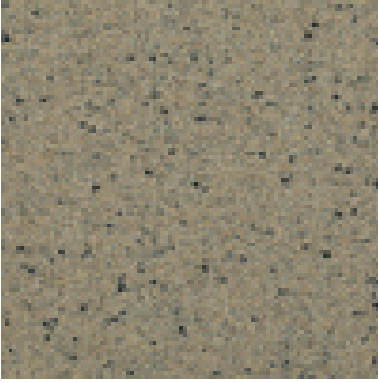
Norton  
746



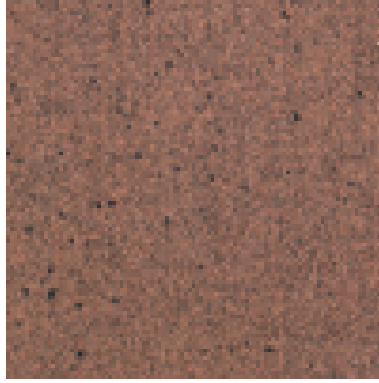
Oakley  
733



Sandy  
760



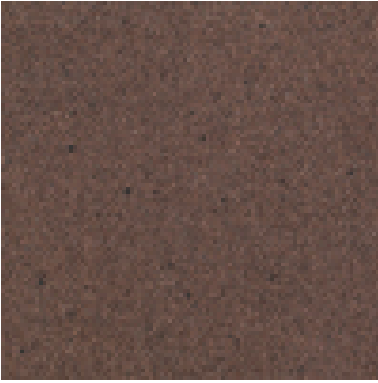
Shelford  
758



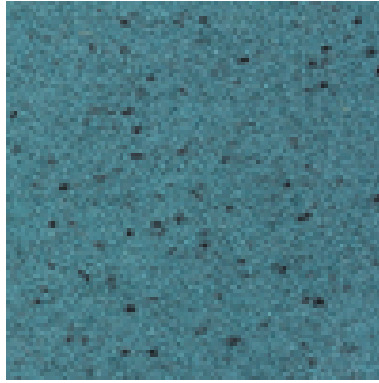
Studley  
734



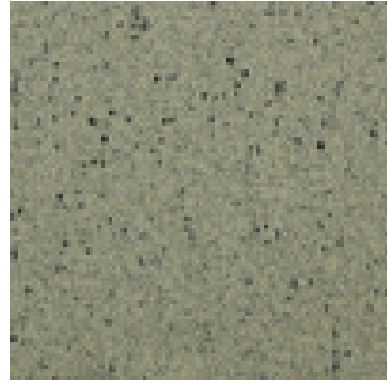
Tadley  
759



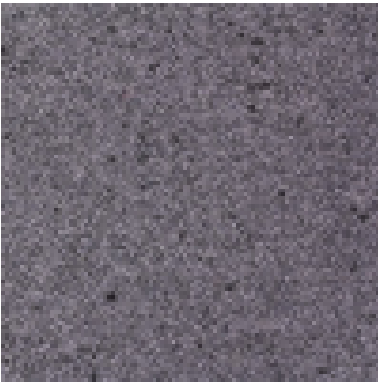
Thame  
720



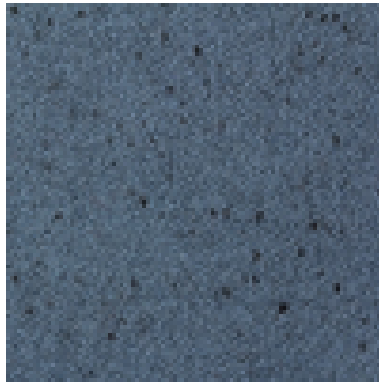
Wicken  
753



Winson  
736



Witney  
722



Woodstock  
723



**Application:**

Upholstery fabric suitable for soft and restaurant style seating

**Composition:**

90% Wool, 10% Nylon

**Width:**

140 cms + 2% usable

**Weight:**

520 gms/m<sup>2</sup> (730gms/linear m)

**Abrasion:**

BS EN ISO 5470-2 : 2003 Method 1 > 170,000 Rubs

**Flame Retardancy:**

BS EN 1021 – 1: 2006 (Cigarette)

BS EN 1021 – 2: 2006 (Match)

BS 7176: 2007 Low Hazard

Note: Flammability performance is dependent on foam used.

**Additional Zirpro treatment required, please specify when ordering**

BS7176: 2007 Medium Hazard

BS5852: Section 4 Ignition Source 5

**Teflon Treated:**

**Superior stain resistance and water repellancy with inherent Teflon treatment**

**Tensile Strength:**

BS EN ISO 13934-1 : 1999

Lengthway 570N, Widthway 340N

**Tear Resistance:**

BS EN ISO 13937-2 : 2000

Torn across length 40N, Torn across width 45N

**Light Fastness:**

BS EN ISO 105 – BO2 : Method 3 to Standard – 4

**Fastness to Rubbing:**

BS EN ISO 105 – X12 : 2002 – 4-5 (Wet & Dry)

**Colour Matching:**

Batch to batch variations in shade may occur within commercial tolerances. We recommend that fabric be examined before use as no claims will be considered after cutting.

**Availability:**

Generally ex stock

**Product Development:**

We reserve the right to change the specification of our products in line with our product development program without notice.

**Fabric Care and Maintenance:**

Vacuum regularly to remove dust and any surface soiling. Use a damp cloth with warm water for more stubborn staining or soiling. Please refer to our cleaning and maintenance guide for additional details.

**Technical Assistance:**

Our Technical staff will be pleased to offer advice on F.R. and all other technical matters.