

Torro Plus

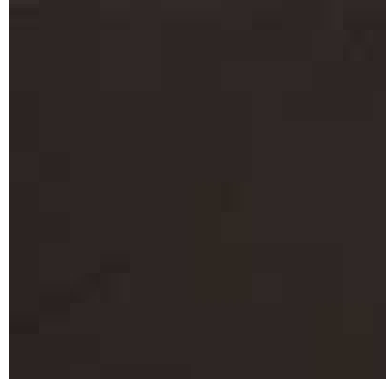
Ebony
0016



Haze
7382



Hide
7385



Horizon
7387



Ivory
6876



Jaffa
7386



Latte
5800



Malachite
7384



Mercury
6790



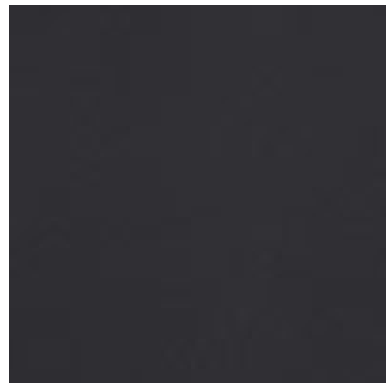
Merlot
5805



Metallic
6259*m



Midnight
5990



Ochre
6787



Oxide
6774*^m



Paradise
7388



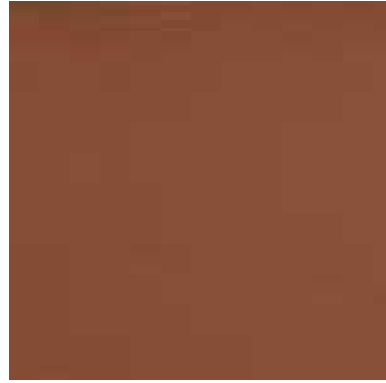
Praline
6780



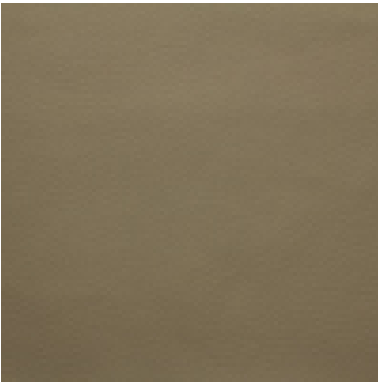
Sorbet
7389



Tan
6786



Truffle
6873



Valentino
7390



Vanilla
6874



Application:

Upholstery fabric suitable for soft and restaurant style seating

Composition:

54.2% Polyurethane, 26.3% Polyester, 19.5% Cotton

Width:

137 cms + 2% usable

Weight:

560 gms/m2 (includes FR back coating)

Abrasion:

BS EN ISO 5470 - 2 : 2003 Method 1 > 100,000 Rubs

Flexing:

Method B – Schildknecht method of ISO 7854:1997 > 700,000 Cycles

Flame Retardancy:

BS EN 1021 – 1: 2006 (Cigarette)

BS EN 1021 – 2: 2006 (Match)

BS 7176: 2007 Low Hazard

BS 7176: 2007 Medium Hazard

BS 5852: Section 4 Ignition Source 5

Note: FR back coating applied to achieve FR levels

Note: Flammability performance is dependent on foam used.

Tensile Strength:

BS EN ISO 13934-1 : 1999

Lengthway 640N, Widthway 470N

Tear Resistance:

BS EN ISO 13927-2 : 2000

Torn across length 46N, Torn across width 47N

Light Fastness:

BS EN ISO 105 – B02 : Method 3 to Standard – 5

Sea Water Fastness:

BS EN ISO 105 – E02: 1996 - 5

Fastness to Rubbing Wet & Dry:

BS EN ISO 105 – X12 : 2002 – 5

Colour Matching:

Batch to batch variations in shade may occur within commercial tolerances. We recommend that fabric be examined before use as no claims will be considered after cutting.

Availability:

Generally ex stock

Product Development:

We reserve the right to change the specification of our products in line with our product development program without notice.

Fabric Care and Maintenance:

Remove any spillages or stains with a damp cloth. Please refer to our cleaning and maintenance guide for additional details.

Technical Assistance:

Our Technical staff will be pleased to offer advice on F.R. and all other technical matters.