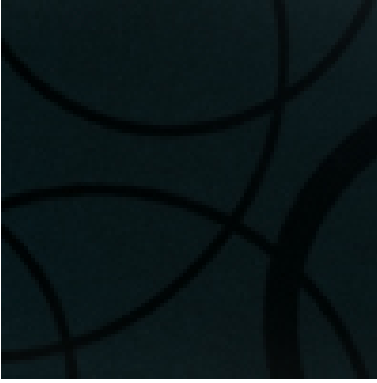
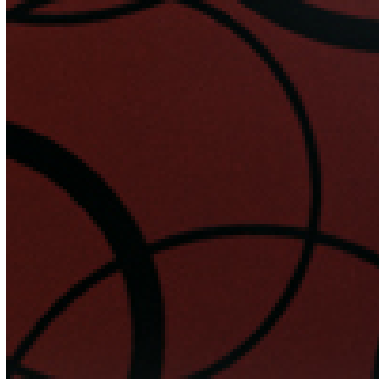


# Solar

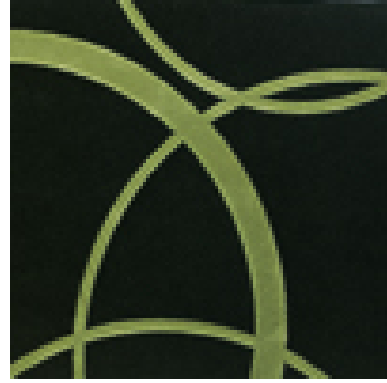
Argon  
50-800P



Auburn  
44-801P



Avocado  
18-117P



Azure  
26-238P



Coffee  
36-393P



Cream  
36-308P



Diamond  
50-502P



Flame  
60-618P



Gypsy  
76-760P



Haze  
26-800P



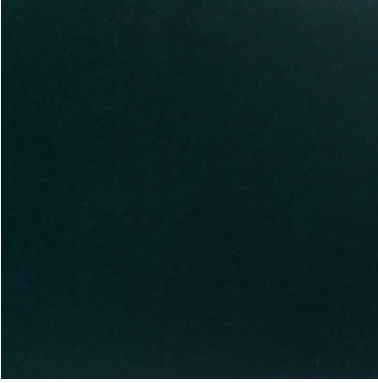
Kiki  
8076



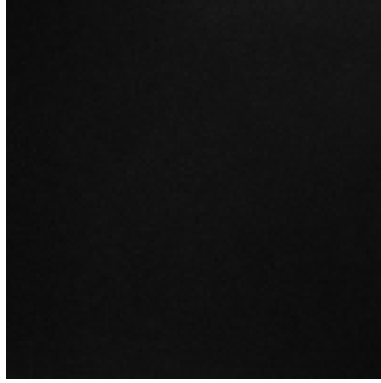
Olive  
8018



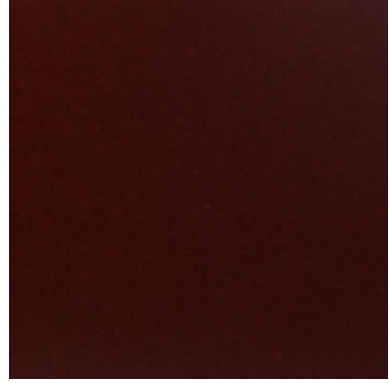
Persian  
8026



Platinum  
8050



Russet  
8044



Sepia  
8060



Walnut  
8036



**Application:**

Upholstery fabric suitable for soft and restaurant style seating

**Composition:**

Patterned – 45% Polyester, 28% Nylon, 27% Acrylic

Plain – 50% Polyester, 25% Acrylic, 25% Nylon

**Width:**

141 cms + 2% usable

**Weight:**

540 gms/m<sup>2</sup>

**Abrasion:**

BS EN ISO 5470-2 : 2003 Method 1 > 160,000 Rubs

**Flame Retardancy:**

BS EN 1021 – 1: 2006 (Cigarette)

BS EN 1021 – 2: 2006 (Match)

BS 7176: 2007 Low Hazard

BS 7176: 2007 Medium Hazard

BS 5852: Section 4 Ignition Source 5

Note: FR back coating is applied to achieve FR levels.

Note: Flammability performance is dependent on foam used.

**Tensile Strength:**

BS EN ISO 13934-1 : 1999

Lengthway 450N, Widthway 210N

**Tear Resistance:**

BS EN ISO 13927-2 : 2000

Torn across length 40N, Torn across width 45N

**Light Fastness:**

BS EN ISO 105 – BO2 : Method 3 to Standard – 5+

**Fastness to Rubbing:**

BS EN ISO 105 – X12 : 2002 – 4-5 (Wet & Dry)

**Colour Matching:**

Batch to batch variations in shade may occur within commercial tolerances. We recommend that fabric be examined before use as no claims will be considered after cutting.

**Availability:**

Generally ex stock

**Product Development:**

We reserve the right to change the specification of our products in line with our product development program without notice.

**Fabric Care and Maintenance:**

Remove any spillages or stains with a damp cloth. Please refer to our cleaning and maintenance guide for additional details.

**Technical Assistance:**

Our Technical staff will be pleased to offer advice on F.R. and all other technical matters.