

# Nevada Quilted

Caesars  
Q600



Circus  
Q607



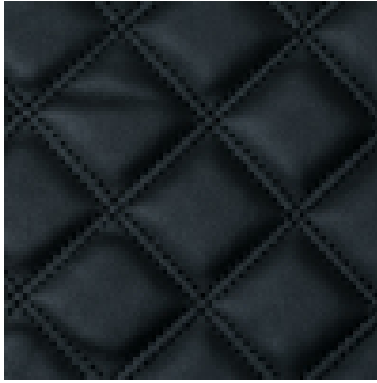
Luxor  
Q618



Mandalay  
Q604



Mirage  
Q690



Venetian  
Q625



Wynn  
Q623



**Application:**

Upholstery faux leather suitable for soft seating

**Composition:**

Face - 100% Polyurethane

Backing - 67% Polyester, 33% Cotton

**Width:**

140 cms + 2% usable

**Weight:**

679 gms (uncoated)

**Abrasion:**

BS EN ISO 5470-2 : 2003 Method 1 > 200,000 Rubs

**Flame Retardancy:**

BS EN 1021 – 1: 2006 (Cigarette)

BS EN 1021 – 2 (Match)

BS 7176: 2007 Low Hazard

Note: Flammability performance is dependent on foam used.

**Note: NEVADA QUILTED meets Low Hazard FR standards, therefore we recommend that a Crib 5 interliner is used to enhance its FR properties.**

**Tensile Strength:**

BS EN ISO 13934-1 : 1999

Lengthway 700N, Widthway 470N

**Tear Resistance:**

BS EN ISO 13927-2 : 2000

Torn across length 45N, Torn across width 80N

**Light Fastness:**

BS EN ISO 105 – B02 : Method 3 to Standard – 4

**Fastness to Rubbing:**

BS EN ISO 105 – X12 : 2002

**Wet & Dry:**

4-5 (Wet & Dry)

**Colour Matching:**

Batch to batch variations in shade may occur within commercial tolerances. We recommend that fabric be examined before use as no claims will be considered after cutting.

**Availability:**

Generally ex stock

**Product Development:**

We reserve the right to change the specification of our products in line with our product development program without notice.

**Fabric Care and Maintenance:**

Remove any spillages or stains with a damp cloth. Please refer to our cleaning and maintenance guide for additional details.

**Technical Assistance:**

Our Technical staff will be pleased to offer advice on F.R. and all other technical matters.

**\*These colours are also available in the Nevada range.**