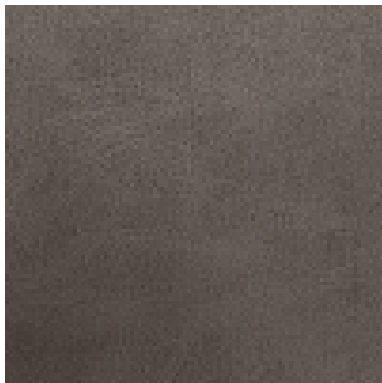


# Verona

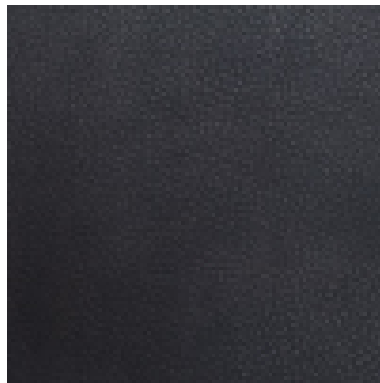
Angelo  
AN305



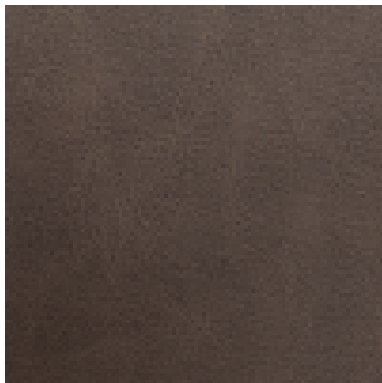
Flavia  
AN307



Gino  
AN323



Luigi  
AN318



Mario  
AN319



Romeo  
AN375



**Application:**

Upholstery fabric suitable for soft and restaurant style seating

**Composition:**

Face: 100% Polyurethane

Backing: 67% Polyester, 33% Cotton

**Width:**

140 cms + 2% usable

**Weight:**

VERONA: 446 gms/m<sup>2</sup> (uncoated)

**Abrasion:**

BS EN ISO 5470-2 : 2003 Method 1 &gt; 250,000 Rubs

**Flame Retardancy:**

BS EN 1021 – 1: 2006 (Cigarette)

BS EN 1021 – 2: 2006 (Match)

BS 7176: 2007 Low Hazard

BS 7176: 2007 Medium Hazard

BS 5852: Section 4 Ignition Source

Note: FR back coating applied to achieve FR levels.

Note: Flammability performance is dependent on foam used.

**Tensile Strength:**

BS EN ISO 13934-1 : 1999

**VERONA: Lengthway 750N, Widthway 580N**

**Tear Resistance:**

BS EN ISO 13927-2 : 2000

**VERONA: Torn across length 85N, Torn across width 44N**

**Light Fastness:**

BS EN ISO 105 – BO2 : Method 3 to Standard – 5+

**Fastness to Rubbing:**

BS EN ISO 105 – X12 : 2002

**Wet & Dry:**

**VERONA: 5 (Wet & Dry)**

**Colour Matching:**

Batch to batch variations in shade may occur within commercial tolerances. We recommend that fabric be examined before use as no claims will be considered after cutting.

**Availability:**

Generally ex stock

**Product Development:**

We reserve the right to change the specification of our products in line with our product development program without notice.

**Fabric Care and Maintenance:**

Remove any spillages or stains with a damp cloth. Please refer to our cleaning and maintenance guide for additional details.

**Technical Assistance:**

Our Technical staff will be pleased to offer advice on F.R. and all other technical matters.