

Pyra™

Black
PY12



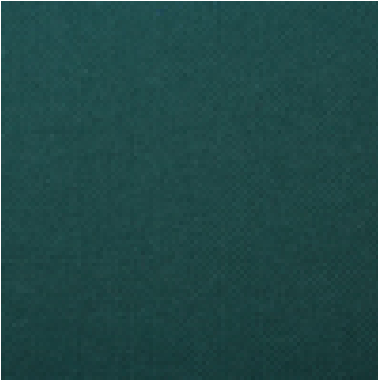
Burgundy
PY07



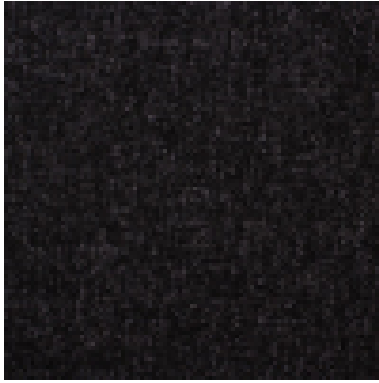
Cactus
PY27



Caspian
PY11



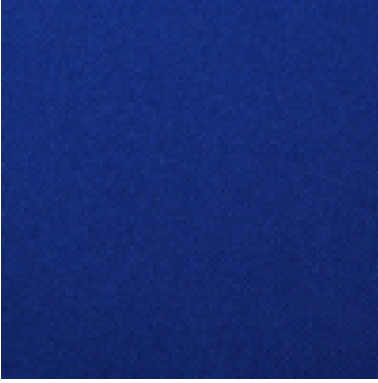
Charcoal
PY09



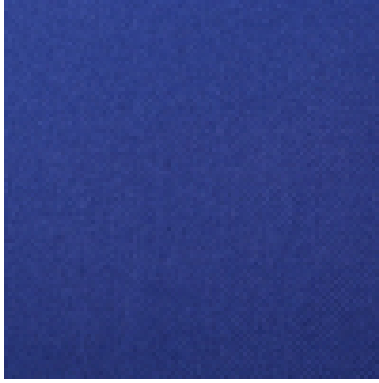
Claret
PY16



Cobalt
PY05



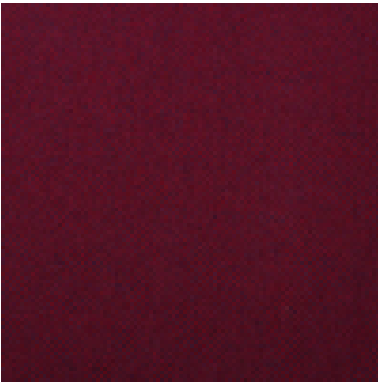
Corinth
PY26



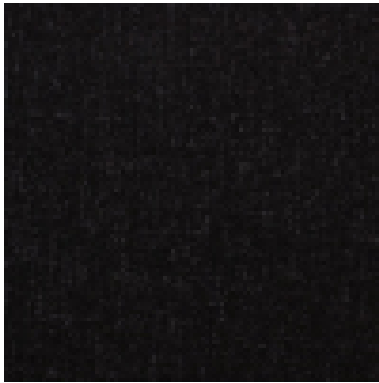
Daffodil
PY20



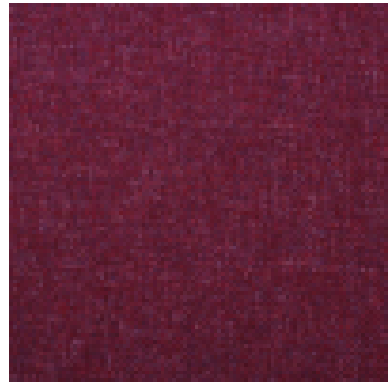
Damson
PY21



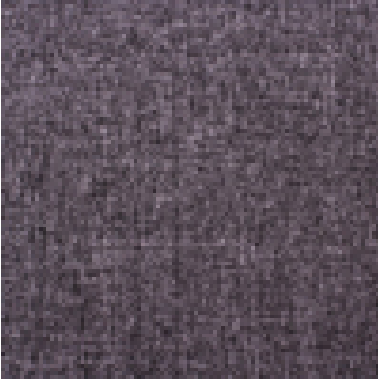
Dusk
PY15



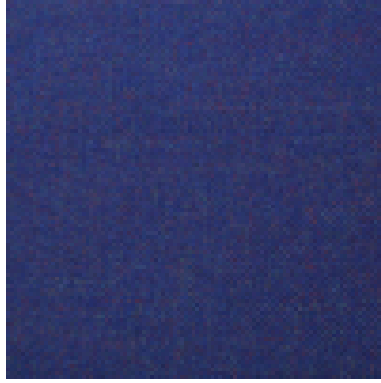
Grape
PY22



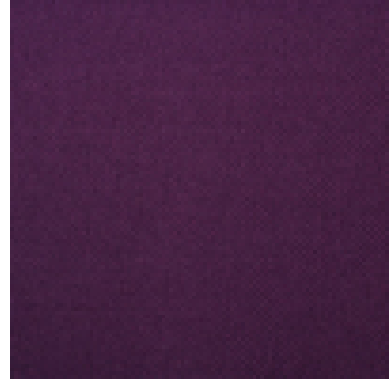
Grey
PY06



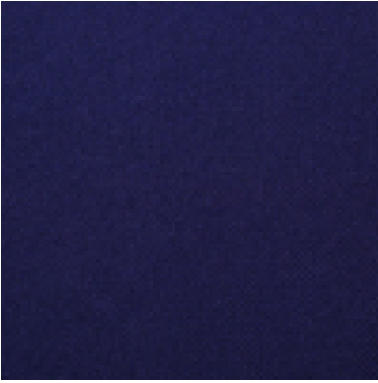
Harlequin
PY25



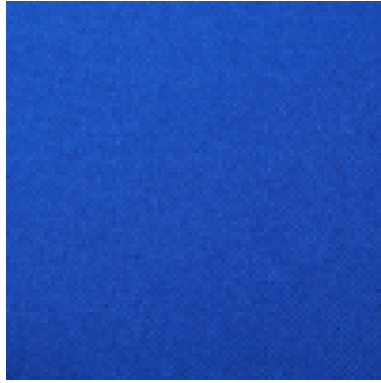
Heather
PY18



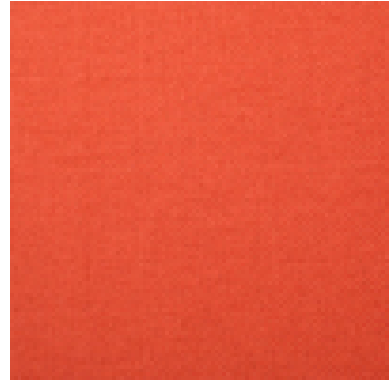
Navy
PY08



Ocean
PY24



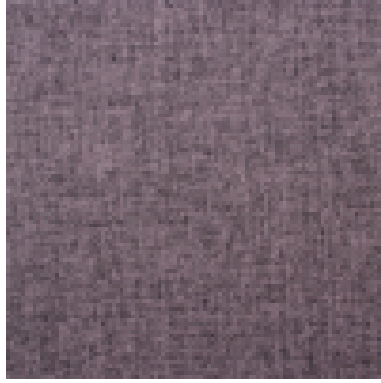
Orange
PY13



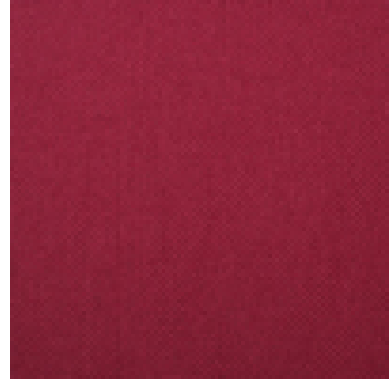
Peat
PY10



Perth
PY03



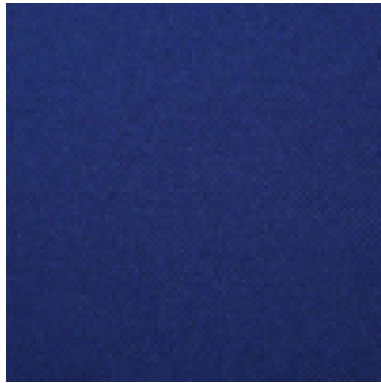
Plum
PY04



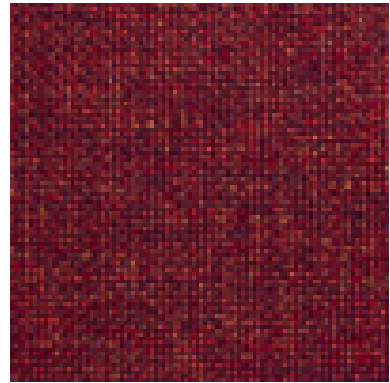
Red
PY01



Royal
PY02



Sangria
PY28



Application:

Upholstery fabric

Composition:

100% Polypropylene

Width:

143cm Tolerance \pm 2%

Weight:

220gms/m² Tolerance \pm 5%

Abrasion:

Tested in accordance with BS EN ISO 12947-1:1999 as modified by Annex F of BS 2543: 2006 to 60,000 rubs Martindale.

Meets the requirements of BS 2543: 2004

Flame Retardancy:

BS 7176: 2007 Direct Test for Low Hazard premises.

BS EN 1021 – 1&2: 2006 (passes cigarette and match)

Note: Flammability performance is dependent on foam used.

Light Fastness:

5+ (ISO 105 – B02:1999)

Colour Matching:

Batch to batch variations in shade may occur within commercial tolerances. We recommend that fabric be examined before use as no claims will be considered after cutting.

Product Development:

We reserve the right to change the specification of our products in line with our product development programme without notice.

Fabric Care And Maintenance:

Clean using a proprietary upholstery shampoo. Please refer to our fabric care guide.

Availability:

All our fabrics are generally available ex-stock for immediate despatch.

Technical Assistance:

Our technical staff will be pleased to offer advice on F.R. and other matters.

Guarantee:

Fabric guaranteed for 5 years under normal wear and tear. See our Terms and Conditions