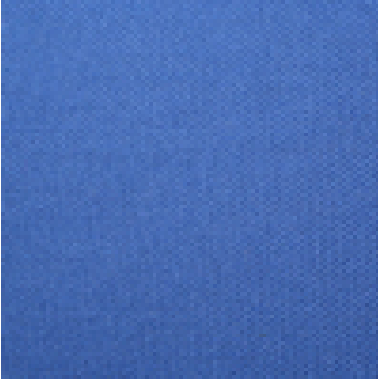


Flamblend®

Arctic
008



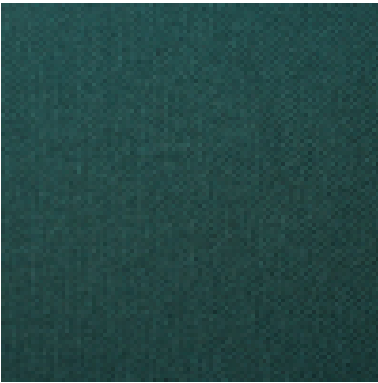
Arizona
101



Aztec
010



Balmoral
011



Bamboo
117



Blue Slate
013



Blue Wind
333



Carnation Red
016



Cascade
203



Charcoal
115



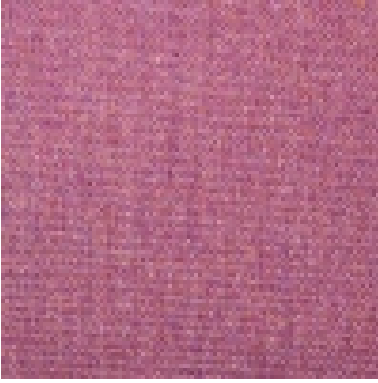
Cinnebar
018



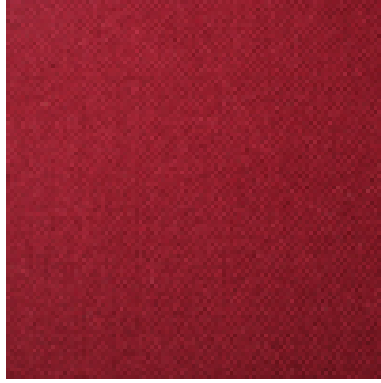
Circus Plume
332



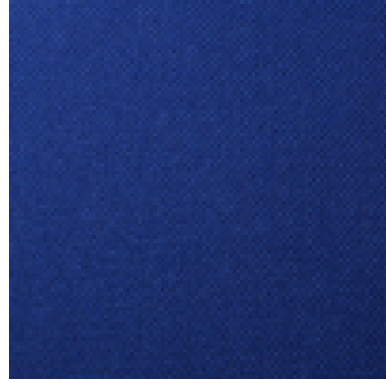
Clover
220



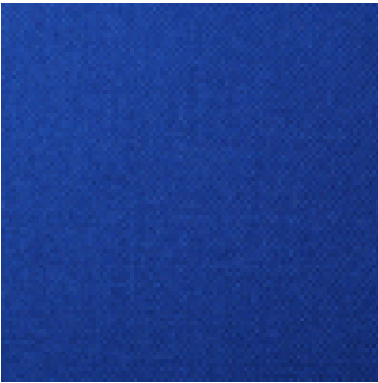
Copper Beech
019



Deep Blue
001



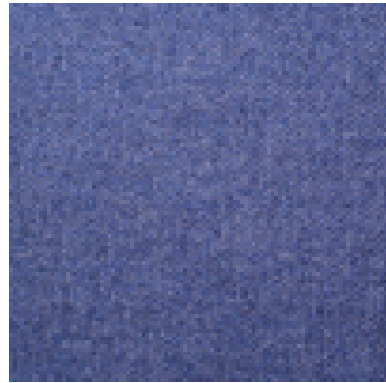
Delphinium
021



DK Grey
110



Duckegg
023



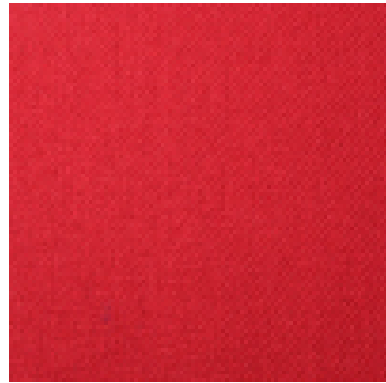
Gunmetal
025



Heron
212



Honeysuckle
028



Indian
201



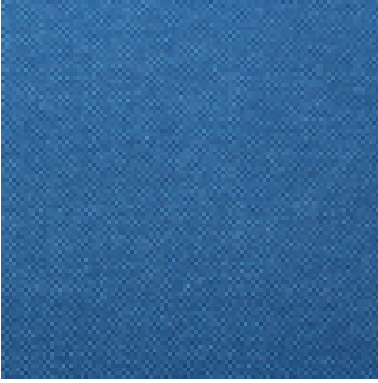
Iris
029



Kirko
340



Lake
030



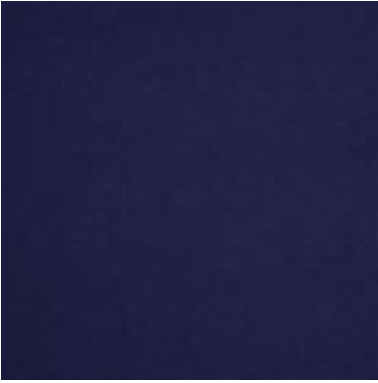
Lupin
032



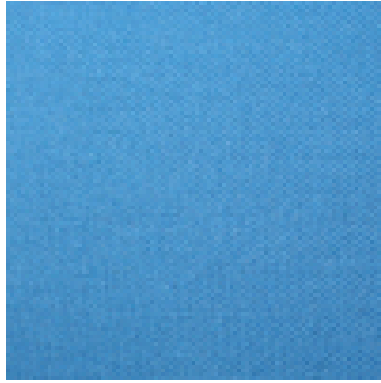
Luska
330



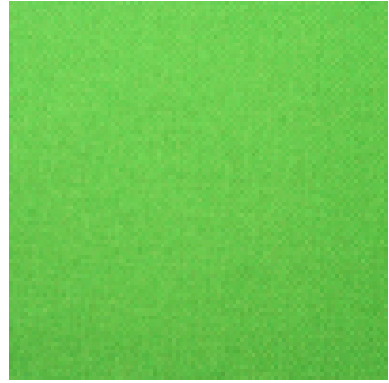
Midnight
213



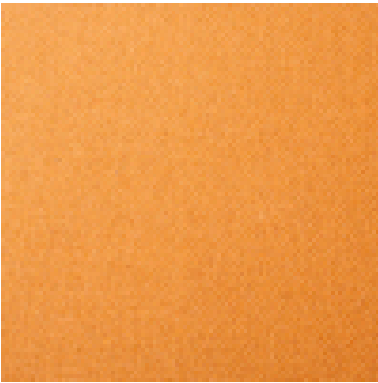
Mineral
037



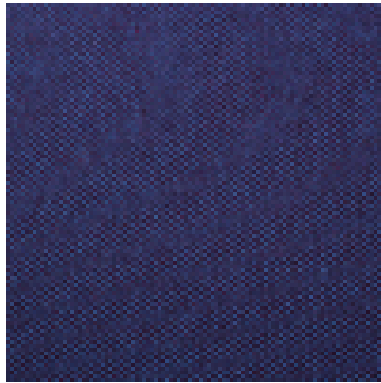
Moss
039



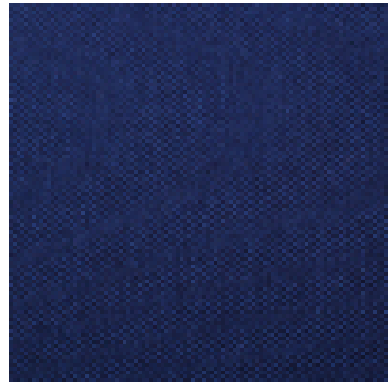
Mustard
040



Nightsky
041



Oxford
043



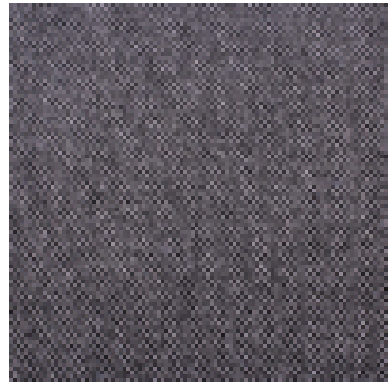
Pansy
005



Peat
116



Pebble
006



Phoenix
200



Porcelain
205



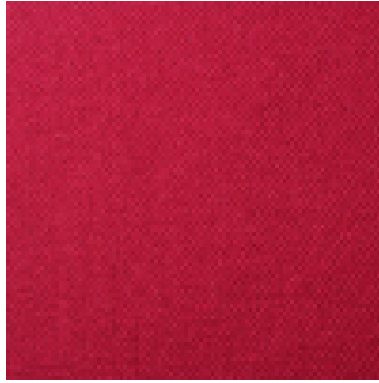
Red Rum
331



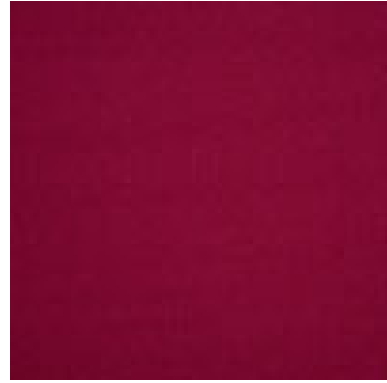
Riviera
216



Rosewood
003



Rouge
228



Royal
095



Shell
053



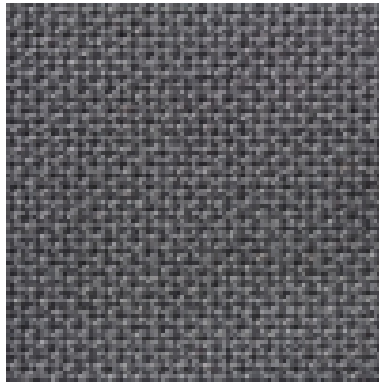
Silver Buck
339



Sir Ivor
334



Slate
054



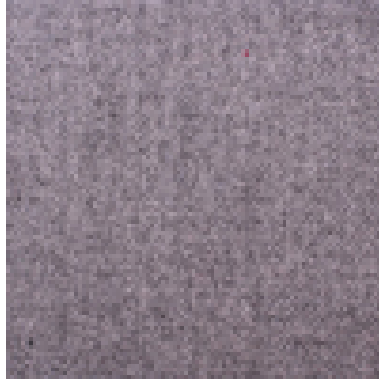
Soot
055



Spring Leaf
056



Stone
057



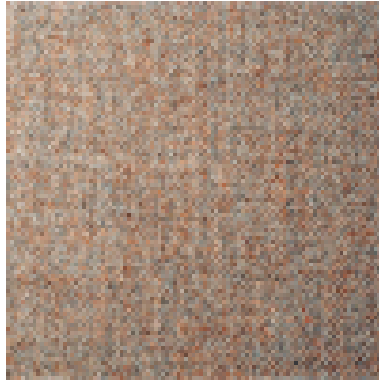
Sunset
058



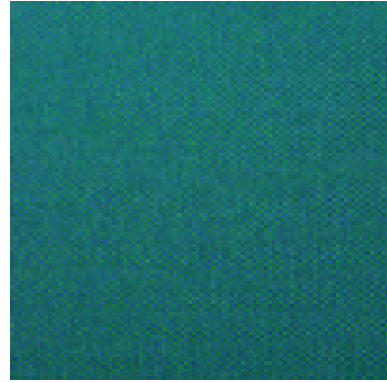
Tangerine
059



Tawny
060



Verde
064



Volcano
002



West Tip
338



Zonda
336



Application:

Upholstery fabric

Composition:

45% Wool, 45% FR Modacrylic, 10% Nylon

Width:

132cm Tolerance $\pm 2\%$ usable

Weight:

414gms/m² Tolerance $\pm 5\%$

Abrasion:

Tested in accordance with BS EN ISO 12947-2: 1999 as modified by Annex F of BS 2543: 2004 to 100,000 rubs Martindale. Meets requirements of BS 2543: 2004 and has been graded SEVERE CONTRACT suitable for all types of upholstery use

Flame Retardancy:

BS 7176: 2007 Low Hazard

BS 7176: 2007 Medium Hazard

BS EN 1021 - 1&2: 2006 (cigarette and match)

BS 5852: 2006 Ignition source 5

Note: Flammability performance is dependant on foam used

Light Fastness:

5+ (ISO 105 - B02: 1999)

Fastness to Rubbing:

Wet:4+ Dry:4+ (ISO 105 - X12:2002)

Stain Repellance:

Treated as standard

Colour Matching:

Batch by batch variations in shade may occur within commercial tolerances. We recommend that fabric be examined before use as no claims will be considered after cutting. None metallic dyestuffs are used in Flamblend

Product Development:

Specifications may be modified from time to time in accordance with our product development

Fabric Care And Maintenance:

Clean using a proprietary upholstery shampoo. Please see our cleaning guide for further information

Technical Assistance:

Our technical staff will be pleased to offer advice on F.R and other matters

Availability:

Generally ex-stock

Guarantee:

Fabric guaranteed for 5 years under normal wear and tear. See our Terms and Conditions